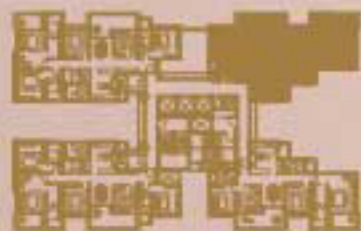
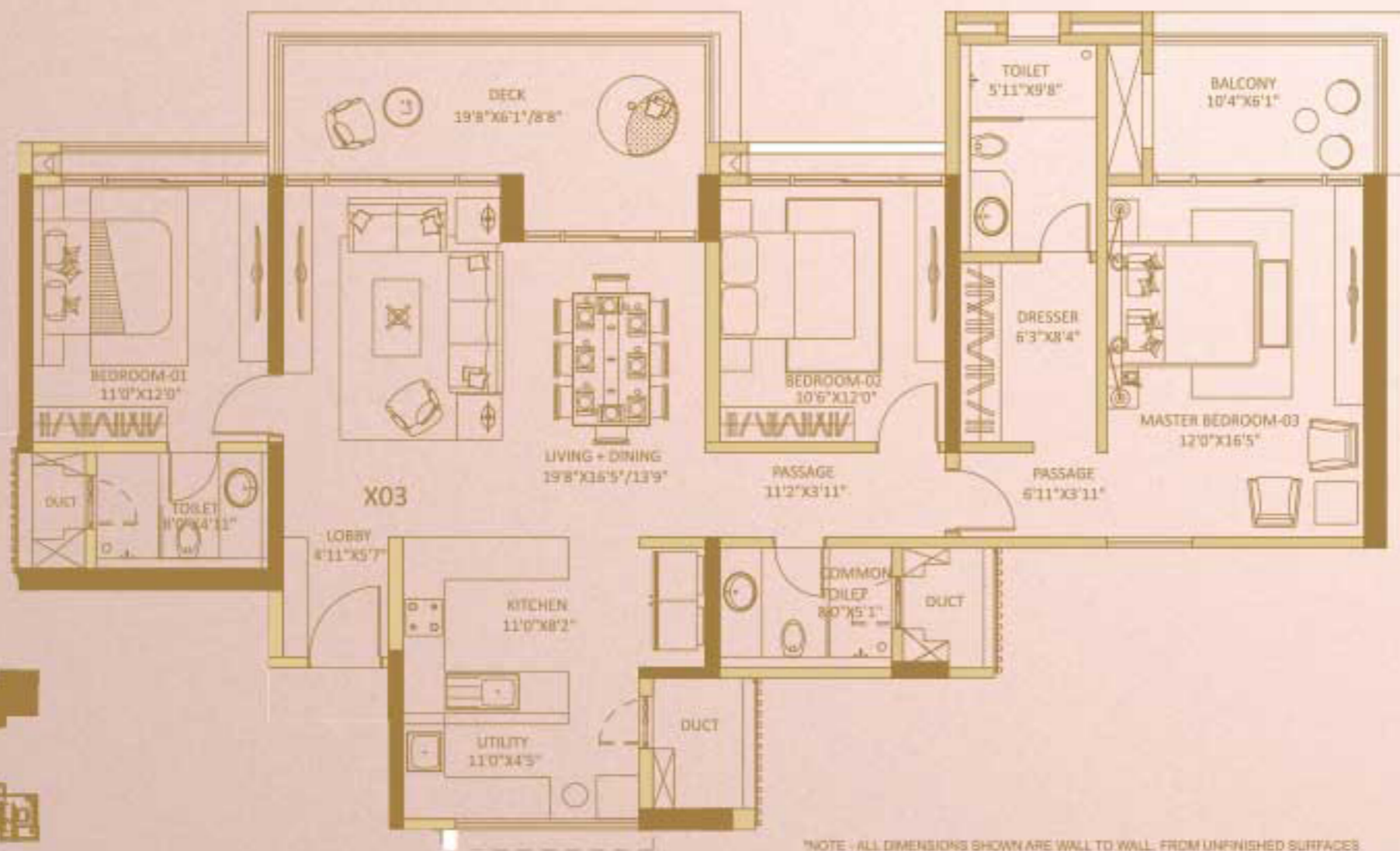


UNIT PLAN (TYPICAL 3BHK X03)

X03
3BHK (CANAL FACING)

AREA OF FLAT	136.42 SQ.M
AREA OF DECKS	23.33 SQ.M
TOTAL AREA OF FLAT	139.75 SQ.M
	1504.26 SQ.FT



KEYPLAN

*NOTE - ALL DIMENSIONS SHOWN ARE WALL TO WALL, FROM UNFINISHED SURFACES
FURNITURE SHOWN IS INDICATIVE ONLY AND IS NOT PART OF STANDARD PRODUCT OFFERING
DIMENSIONS SHOWN ARE INDICATIVE OF THE SPACE AVAILABLE AND DIMENSIONS MAY OVERLAP IN PART
* PLEASE REFER THIS SALE UNIT PLAN ALONG WITH CORRESPONDING SALE FLOOR PLAN



UNIT PLAN (TYPICAL 3BHK X04)

X04
3BHK (CENTRAL MANGO GARDEN FACING)

AREA OF FLAT	116.42 SQ.M
AREA OF DECKS	23.33 SQ.M
TOTAL AREA OF FLAT	139.75 SQ.M
	1504.26 SQ.FT



KEYPLAN

NOTE - ALL DIMENSIONS SHOWN ARE WALL TO WALL, FROM UNFINISHED SURFACES
FURNITURE SHOWN IS INDICATIVE ONLY AND IS NOT PART OF STANDARD PRODUCT OFFERING
DIMENSIONS SHOWN ARE INDICATIVE OF THE SPACE AVAILABLE AND DIMENSIONS MAY OVERLAP IN PART
* PLEASE REFER THIS SALE UNIT PLAN ALONG WITH CORRESPONDING SALES FLOOR PLAN



TOWER 2 - TYPICAL 3BHK (UNIT NO 1)

X01
3BHK (CENTRAL MANGO GARDEN FACING)

AREA OF FLAT	108.07 SQ.M
AREA OF DECKS	20.78 SQ.M
TOTAL AREA OF FLAT	128.85 SQ.M
	1386.94 SQ.FT



KEY PLAN

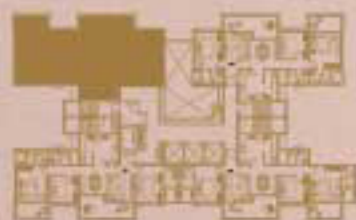
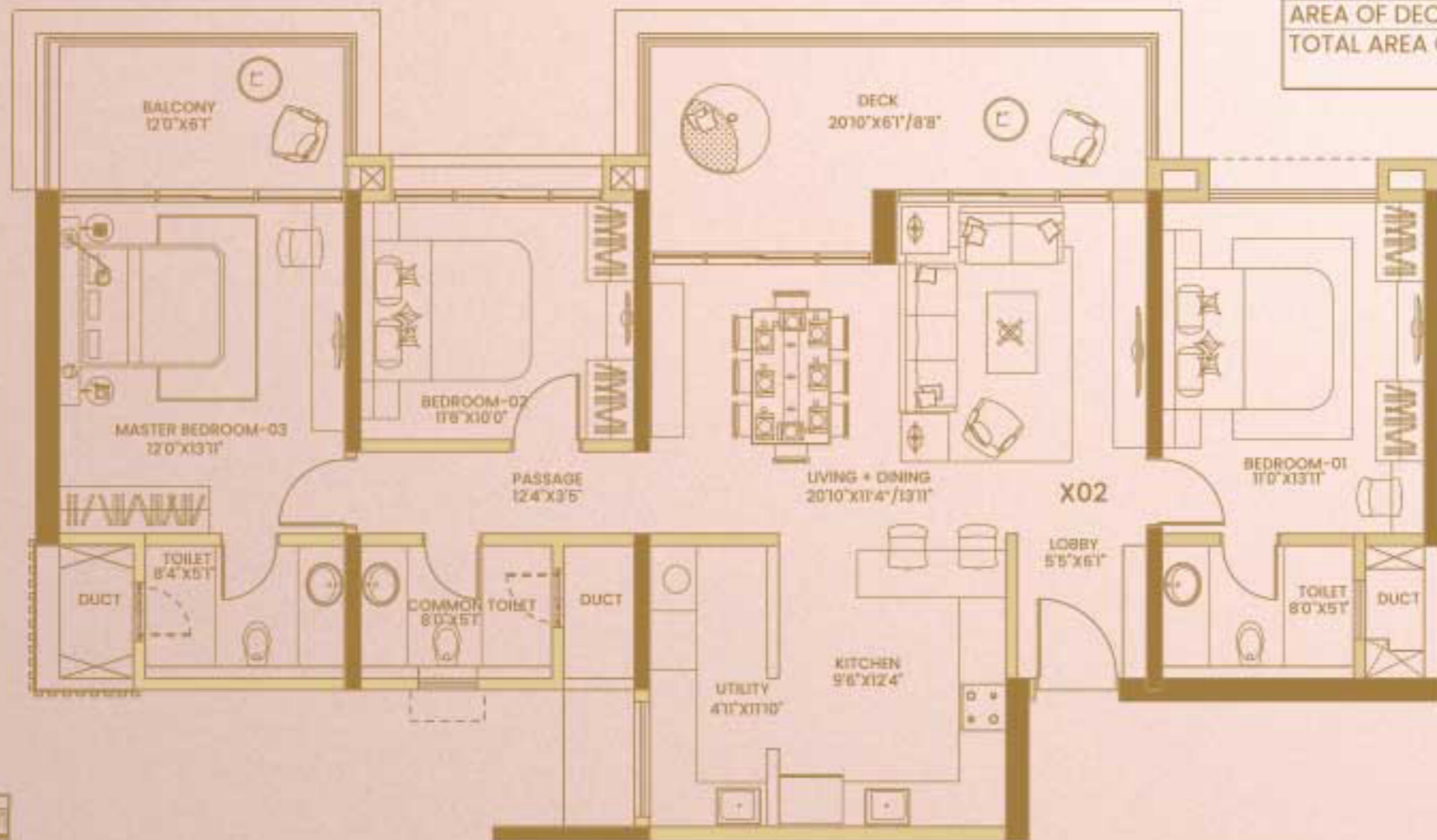
*NOTE - ALL DIMENSIONS SHOWN ARE WALL TO WALL FROM UNFINISHED SURFACES
FURNITURE SHOWN IS INDICATIVE ONLY AND IS NOT PART OF STANDARD PRODUCT OFFERING
DIMENSIONS SHOWN ARE INDICATIVE OF THE SPACE AVAILABLE AND DIMENSIONS MAY OVERLAP IN PART
*PLEASE REFER THIS SALE UNIT PLAN ALONG WITH CORRESPONDING SALE FLOOR PLAN



TOWER 2 - TYPICAL 3BHK (UNIT NO 2)

X02
3BHK (CANAL FACING)

AREA OF FLAT	108.47 SQ.M
AREA OF DECKS	20.78 SQ.M
TOTAL AREA OF FLAT	129.25 SQ.M
	1391.26 SQ.FT



KEYPLAN

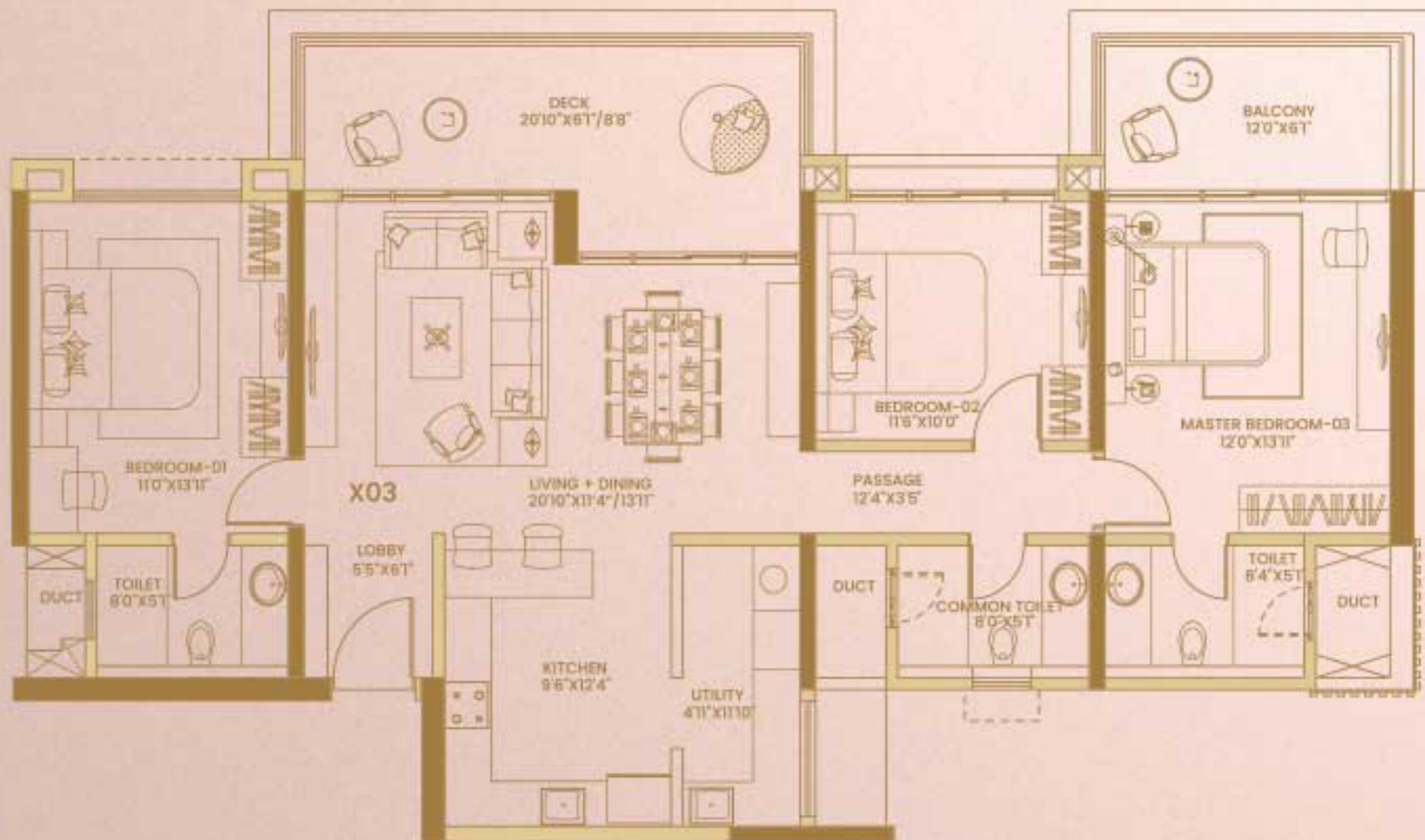
*NOTE - ALL DIMENSIONS SHOWN ARE WALL TO WALL, FROM UNFINISHED SURFACES
 FURNITURE SHOWN IS INDICATIVE ONLY AND IS NOT PART OF STANDARD PRODUCT OFFERING
 DIMENSIONS SHOWN ARE INDICATIVE OF THE SPACE AVAILABLE AND DIMENSIONS MAY OVERLAP IN PART
 * PLEASE REFER THIS SALE UNIT PLAN ALONG WITH CORRESPONDING SALE FLOOR PLAN



TOWER 2 - TYPICAL 3BHK (UNIT NO 3)

X03
3BHK (CANAL FACING)

AREA OF FLAT	108.47 SQ.M
AREA OF DECKS	20.78 SQ.M
TOTAL AREA OF FLAT	129.26 SQ.M
	1391.35 SQ.FT



KEY PLAN

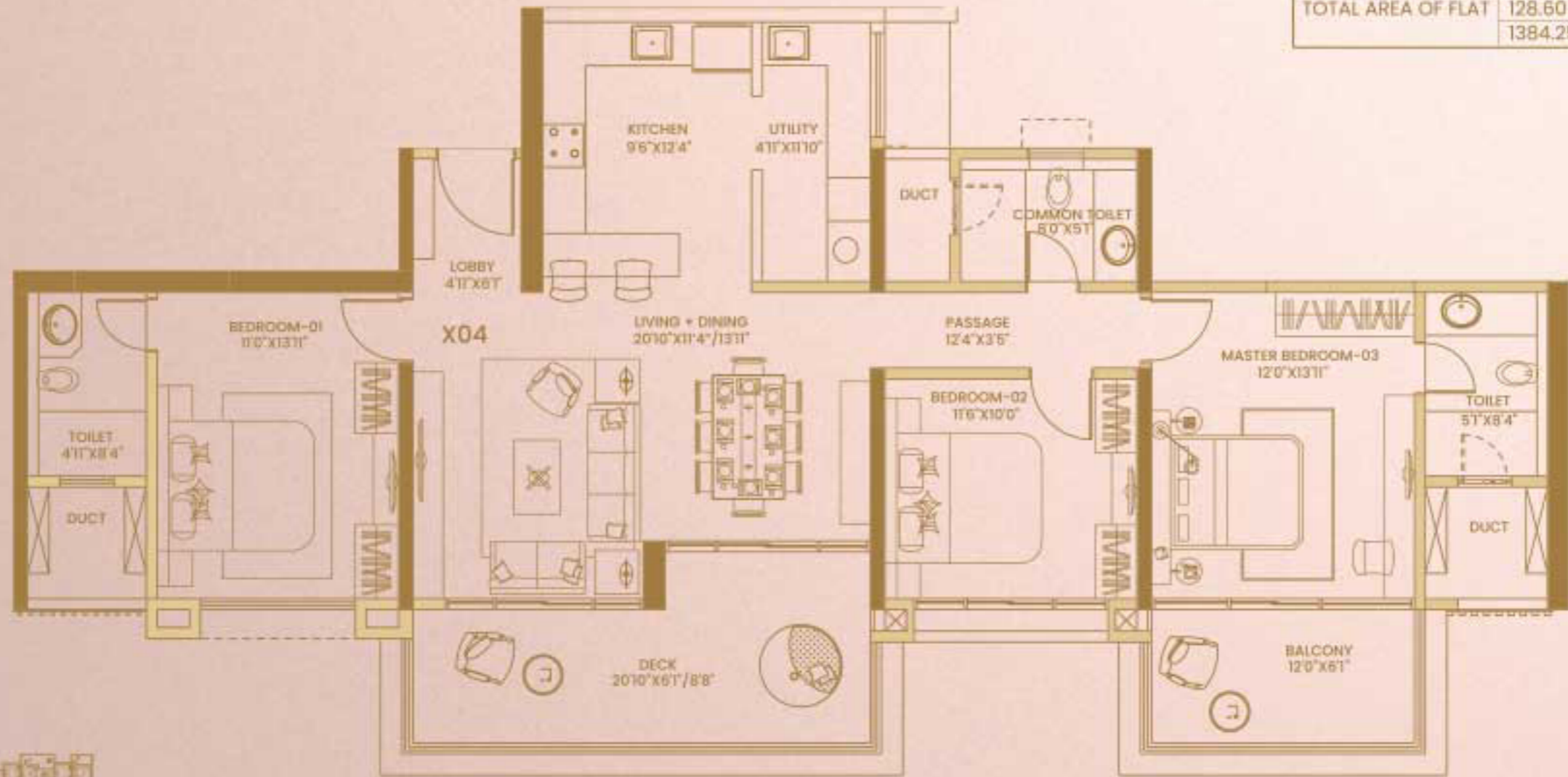
*NOTE - ALL DIMENSIONS SHOWN ARE WALL TO WALL, FROM UNFINISHED SURFACES
 FURNITURE SHOWN IS INDICATIVE ONLY AND IS NOT PART OF STANDARD PRODUCT OFFERING
 DIMENSIONS SHOWN ARE INDICATIVE OF THE SPACE AVAILABLE AND DIMENSIONS MAY OVERLAP IN PART
 * PLEASE REFER THIS SALE UNIT PLAN ALONG WITH CORRESPONDING SALE FLOOR PLAN



TOWER 2 - TYPICAL 3BHK (UNIT NO 4)

X04
3BHK (CENTRAL MANGO GARDEN FACING)

AREA OF FLAT	107.82 SQ.M
AREA OF DECKS	20.78 SQ.M
TOTAL AREA OF FLAT	128.60 SQ.M
	1384.25 SQ.FT



KEYPLAN

*NOTE - ALL DIMENSIONS SHOWN ARE WALL TO WALL - FROM UNFINISHED SURFACES
FURNITURE SHOWN IS INDICATIVE ONLY AND IS NOT PART OF STANDARD PRODUCT OFFERING
DIMENSIONS SHOWN ARE INDICATIVE OF THE SPACE AVAILABLE AND DIMENSIONS MAY OVERLAP IN PART
* PLEASE REFER THIS SALE UNIT PLAN ALONG WITH CORRESPONDING SALE FLOOR PLAN

